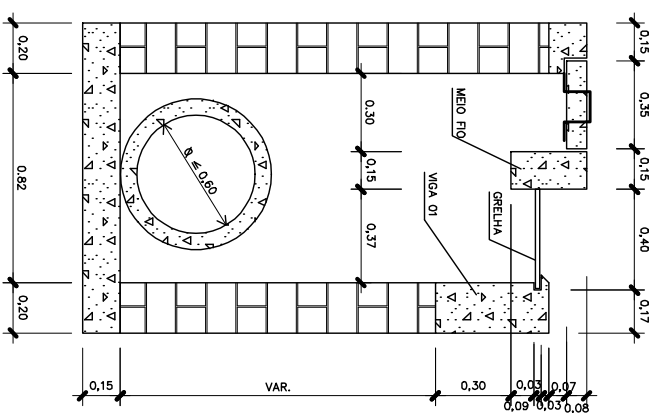
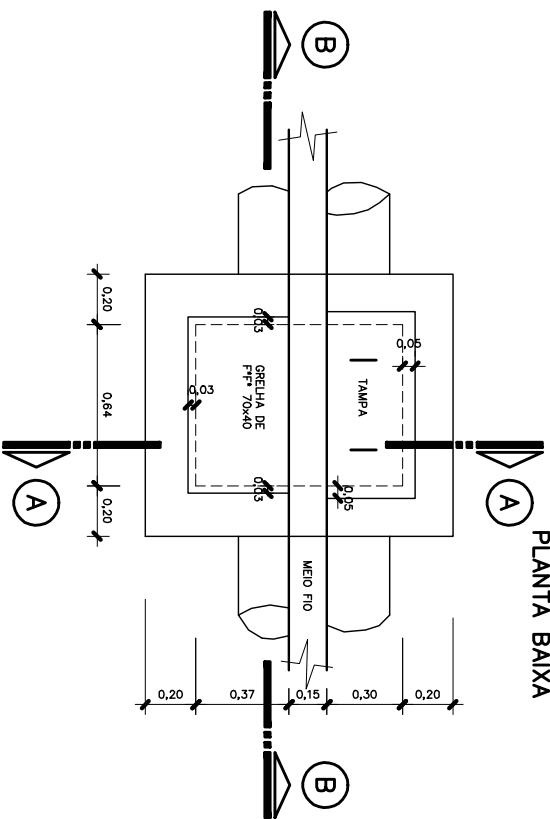


CAIXA COLETORA

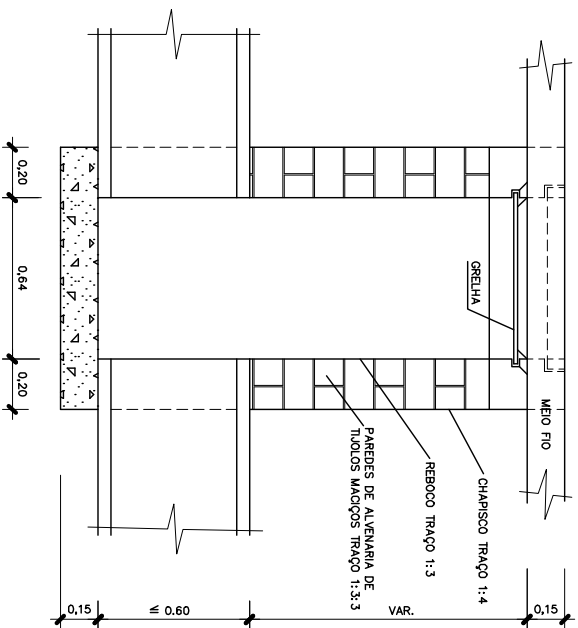
CORTE A-A



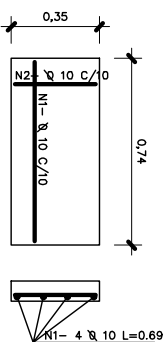
PLANTA BAIXA



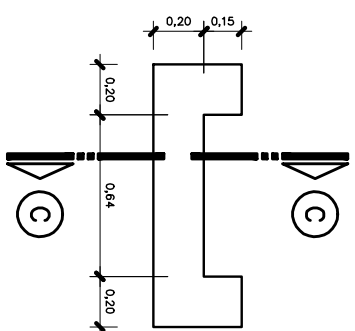
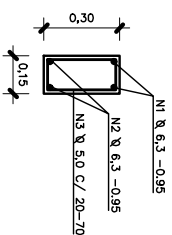
CORTE B-B



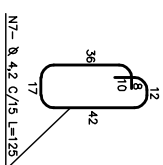
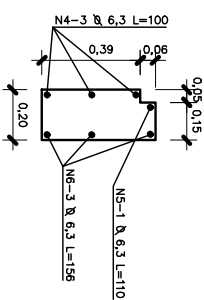
DETALHE DA TAMPA



DETALHE DO MEIO FIO



CORTE C-C



NOTAS - O MEIO FIO LOCALIZADO JUNTO A CAIXA COLETORA DEVERA SER ARMADO CONFORME DESENHO DESTA PRANCHA.
-A GRELHA DEVERA SER CHUMBADA COM ARGAMASSA 1/3.

DRENAGEM

MUNICÍPIO MAJOR GERCINO - S C

OBRA PROJETO TIPO-BOCA DE LOBO COM GRELHA - TIPO 1
CONTEUDO PLANHAS E DETALHES
EXECUÇÃO

DESENHO	ESCALA	TÍTULO	FUNÇÃO	PROJETA
VAR	1/20	OUT./2002	ARQ	CIVIL



ASSOCIAÇÃO DOS MUNICÍPIOS DE SÃO PAULO
"GRANFÓLIS"
ASSESSORIA DE ENGENHARIA E ARQUITETURA